

SHORTWAVE INFRARED PAINT CURING LAMP

HK-003A



INSTRUCTION & MAINTENANCE MANUAL



Read this entire manual carefully and completely
before installation or operation of the wheel balancer

Paint Curing Infrared Heater

Shortwave Infrared Paint Curing Lamp

HK-003A operating manual

Contents

1 、	Precautions-----	2
2 、	Specifications-----	3
3 、	Installation-----	4
4 、	Operation-----	5
5 、	Troubleshooting	
	1.Troubleshooting-----	6
	2.Lamp Tube Replacement-----	7
6 、	Exploded view-----	8
7 、	Circuit Diagram-----	9

Precaution

- 1 、 Read this manual carefully before installing or servicing this equipment..
- 2 、 This equipment is designed for paint drying application .And just correct temperature and check minimum safe distance from heat source inusing . Improper servicng can cause paint surface damage .
- 3 、 Installation and service must be performed by a qualified installer or service agency .
- 4 、 The system has been designed for easy installation, low operatin cost and minimal maintenance .The warranty does not cover lamp tube defects resulting form misused or improperly operation .
- 5 、 Disconnect power source when the equipment not in use for long time .
- 6 、 The lamp tube should not be perpendicular to the ground when the equipment is operating . Otherwise , it will shorten service life of lamp tube .

Specifications

Model	HK-003A
Input power source	Single Phase:220V _240V,50HZ~60HZ
Input power (w)	3 _1100
Curing Area (mm)	800 _800
Temperature (°C)	40-100
Time Setting	electronic display control minutes
Light Intensity (%)	10%-100%

Installation

The shortwave infrared curing lamp is divided into 3 parts (a base ,a frame and a lamp holder).

1) Installation of the base:

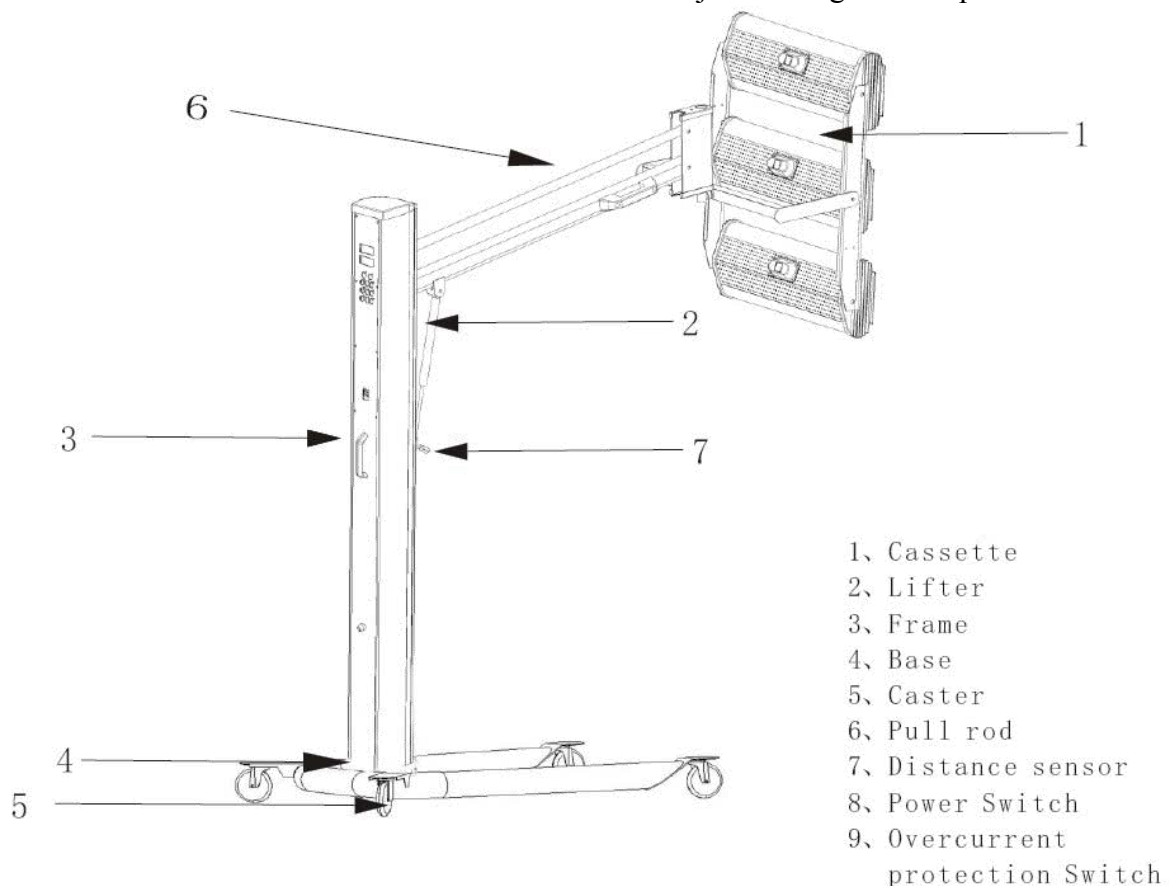
- a、 Open the packing of the base
- b、 Install the four wheels on the base respectively and tighten up the screws .Usually ,the wheels with brakes mounted on the rear of the base .

2) Installation of the frame .

- A、 Open the packing of the frame
- B、 Put the frame vertical on the top of the base ,directly engage the screw holes and tighten up by screws
- C、 Connect the pull rod with the frame for supporting lamp holder
- D、 Connect the lifter with the frame for controlling the up and down movement of lamp holder

3) Installation of the lamp holder

- a、 Open the packing of lamp holder with care
- b、 Connect lamp holder with pull rod and tighten up by screws
- c、 Connect control wires and andjust the angel of lamp holder



Operation

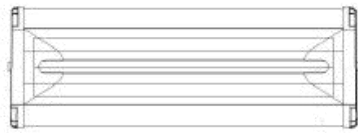
1. connect input cord (not less than 2.5mm² copper cord)
2. Turn on the machine ,digital displays will be on figures.
3. Select "Routine" or pulse"
4. Set temperature and time according to the requirement of paint used for curing. The digital will display data.
5. To achieve the best curing result, the lamp should be parallel with the paint surface.
6. Adjust the distance from heat source to paint surface. Usually, the distance of 30-50 cm is the best.
7. Adjust curing time and light intensity according to the paint nature. Also, the "pulse" curing is applicable to achieve the better indurability of paint surface.
8. In paint curing, the paint surface must be clean, without water and impurities.
9. Turn off the equipment after using, locate the equipment in a safety place to avoid damage of the lamp tube.

Troubleshooting

1、Troubleshooting

Trouble	Reason	Remedy
Lamp tube does not work	1)Lam tube damaged 2)did not plugged 3)SCR damaged	1)Check lamp tube 2)Plugged lamp holder 3)Check SCR
Lamp tube lights all the time	1)SRC damaged	1)Check SCR
Digital displays does not show or shows incomplete	1)Unplugged flat wire in circuit board 2)Digital displays damaged	1)Check flat wire 2)Check digital displays
Can not adjust temperature and time switchs	1)Switch imbalance 2)Key board had exclusion	1)Check the installation of switch 2)Check key board exclusion

2. Lamp Tube Replacement



(1)

1、Prepare Cassette for replacement



(2)

2、Remove the grill of Cassette



(3)

3、Remove the plates of both ends of the Cassette



(4)

4、Remove the fixed plates of the both ends of Cassette



(5)

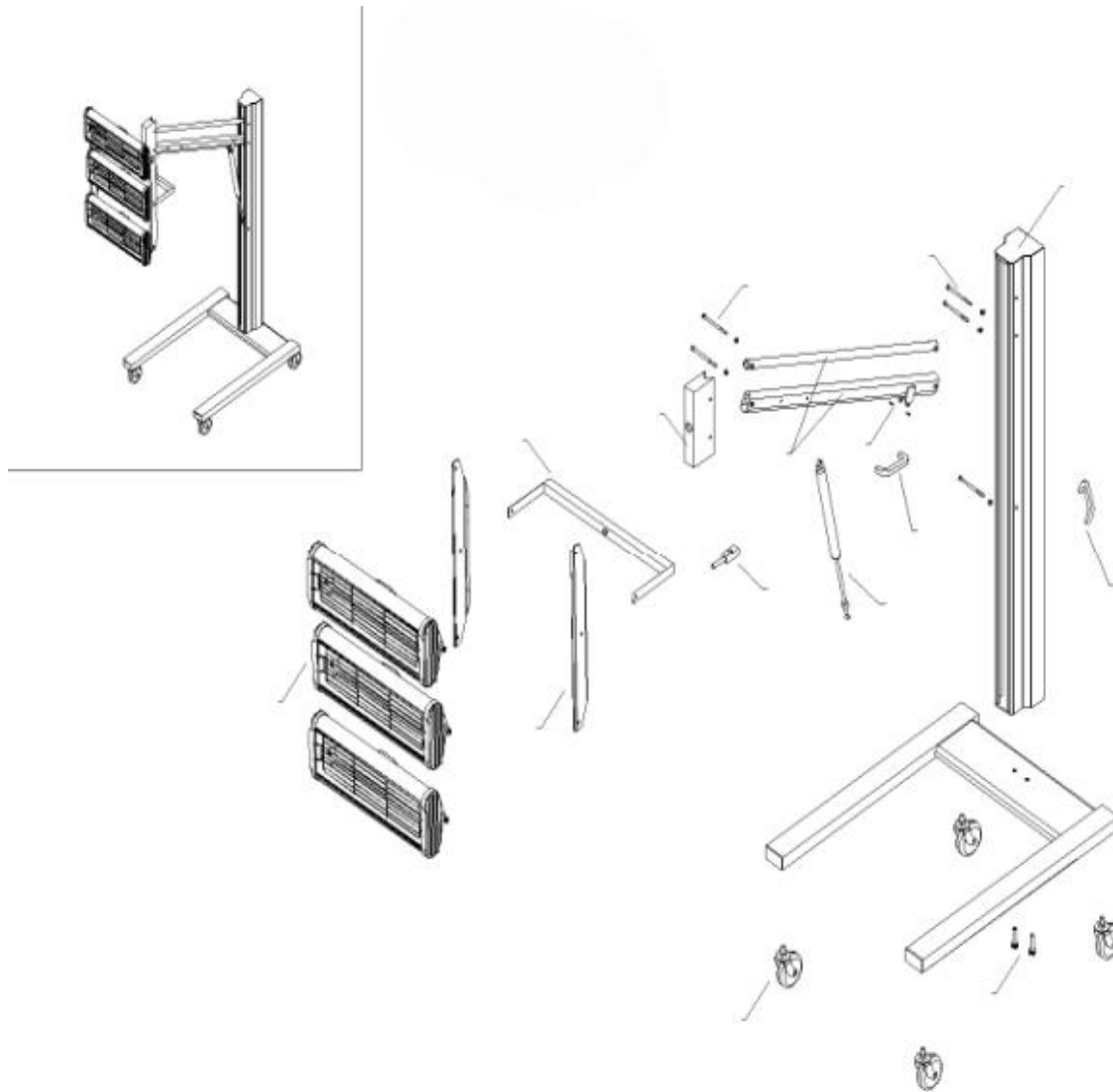
5、Loosen fixed screws and cut off connections, the lamp can be replaced



(6)

6、According the above procedures on the contrary order to install the Cassette

Three lamp accessories picture



NO.	Description	NO.	Description	NO.	Description	NO.	Description
①	Upright Post	⑨	Plastic Nut	⑰	Front Caser	②⑤	Transformer
②	Top Cover	⑩	Connecting Axle	⑱	Base Plate	②⑥	Cover Plate(Upper)
③	Plastic Band	⑪	Bottom Cover of Connector	⑲	Back Caser	②⑦	Circuit Board
④	Connector	⑫	Handle	⑳	Cover Plate(Lower)		
⑤	Top Cover of Connector	⑬	Lower Connecting Rod	㉑	Flange		
⑥	Bracket	⑭	Upper Connecting Rod	㉒	Controlled Silicon		
⑦	Clamping Bar	⑮	Lifter	㉓	Handle		
⑧	Cassette	⑯	Lifter Control	㉔	Power Switch		

Circuit Diagram

MainBoard

