

PARAMETER

CAPACITY.....	20 TON
RAM STROKE.....	150 MM
WIDTH.....	500 MM

FEATURE

1. Used for parts straightening, bending and pressing.
2. Multi-position bed for work height adjustment.
3. With air pump can reduce labor and improve working efficiency

OPERATION

1. Place work piece on bed frame.
2. Locate and close release valve.
3. Pump handle until the ram nears work piece.
4. Apply load to work piece by pumping handle. **Do not overload work piece.**
5. Remove load from work piece by turning release valve. Stabilize work piece so it does not fall while pressure is released.
6. Remove work piece after ram is fully retracted.

WARNING

1. This press is designed and intended for use by properly trained and experienced personnel only. If you are not familiar with the proper and safe operation of a hydraulic press, do not use until proper training and knowledge has been obtained.
2. Do not operate this press beyond its rated capacity.
3. **DO NOT** compress springs or other objects that could be ejected from the press. **DO NOT** compress objects that could shatter.
4. Please understand the max. working stroke before operate, Do not overload the max. working stroke, so as not to damage parts.
5. Check the press for loose or damaged parts before each operation. Replace damaged parts and tighten all loose bolts before operating.
6. Some parts being pressed may have a tendency to pop out of the press or explode under pressure. Protect yourself accordingly.

MAINTENANCE

1. Periodically, lightly oil all moving parts including the pump piston and hydraulic ram.
2. Check hydraulic connections and hoses before each use. Do not use if cut, damaged, leaking or otherwise damaged connections and/or hoses are noted.

PARTS LIST

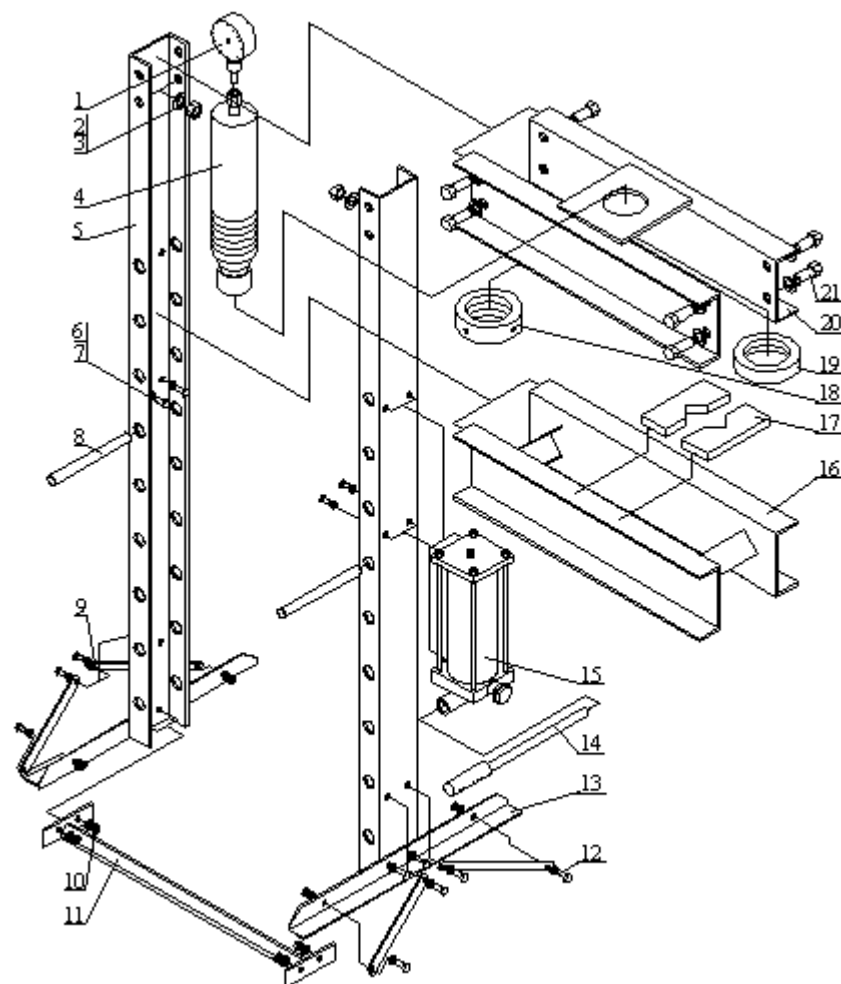
Part No.	Description	Qty
1	Pressure gauge	1
2	Damping nut M16	8
3	Washer M16	16
4	Jack	1
5	Pole	2
6	Bolt M10×15	4
7	Washer M10	28
8	Pin	2
9	Tighten the screws	4
10	Damping nut M10	12
11	Connect board	1
12	Bolt M10×25	12
13	Leg	2
14	Handle	1
15	Pump	1
16	Adjust beam	1
17	Arbor plate	2
18	Limit circle	1
19	Limit ring	1
20	Cross beam	1
21	Bolt M16×40	8

DISASSEMBLE DRAWING

We follow the way that wheel moving!

Tire Equipments

PS92002



INSTRUCTION & MAINTENANCE MANUAL



Read this entire manual carefully and completely
before installation or operation of the wheel balancer